



Marine Safety Information Bulletin

55-23

Hazard Area: Brownsville, TX

Issue Date: April 14, 2023

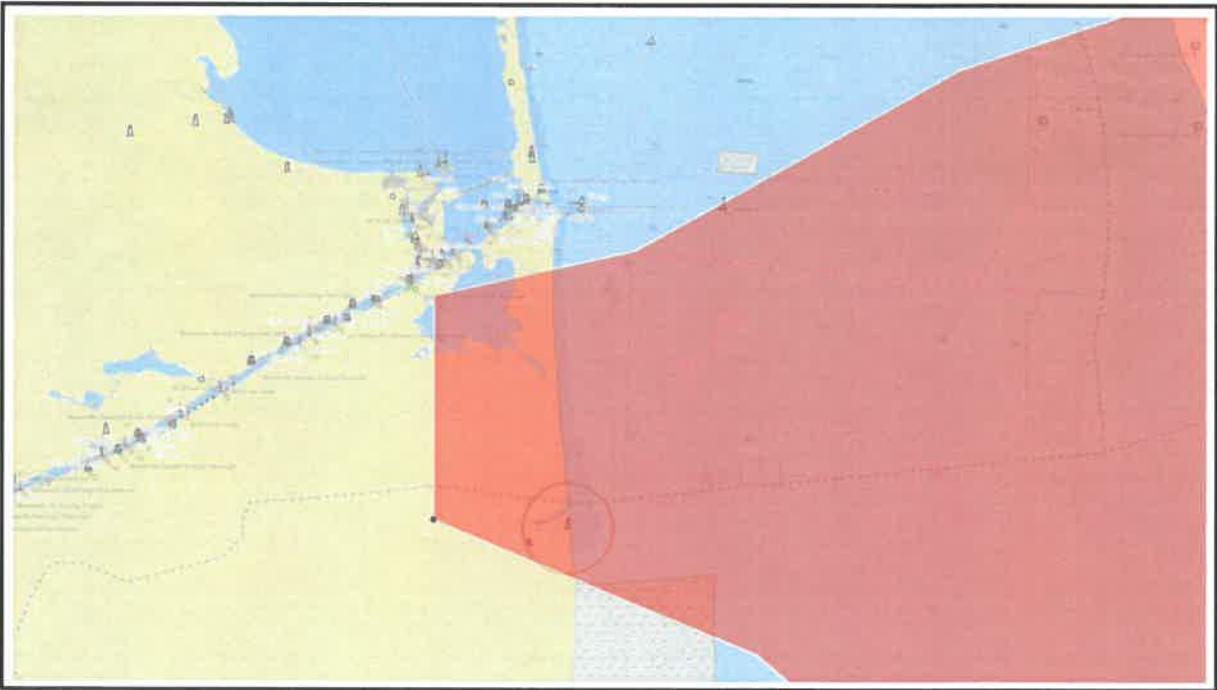
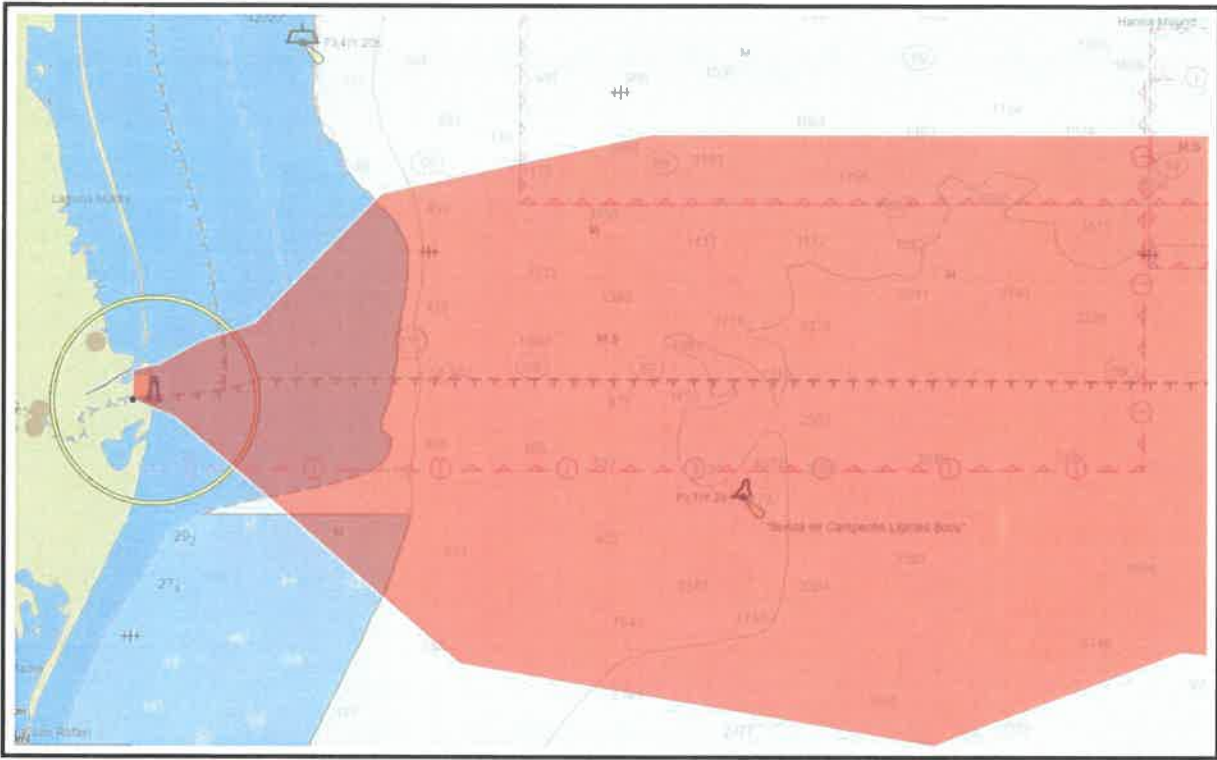
SpaceX has informed the U.S. Coast Guard of scheduled testing at their facility located south of Brownsville, TX, near Boca Chica Beach. Mariners operating offshore in waters east of Brownsville, Texas, are advised of rocket launching activities and associated hazardous areas which may impact navigation interests. Navigational hazards from rocket launching activity may include, free falling debris and/or descending vehicles or vehicle components, under various means of control. Mariners should avoid all waters within rocket flight trajectories originating from launch sites in the vicinity of Boca Chica and Brownsville, Texas. On April 17, 2023 between the hours of 5:25am CST and 11:10am CST, rocket launching operations areas will be bound by the following approximate positions:

25° 57' 0.00" N	97° 12' 0.00" W	25° 33' 0.00" N	92° 44' 0.00" W
26° 2' 0.00" N	97° 12' 0.00" W	25° 32' 0.00" N	93° 7' 0.00" W
26° 6' 0.00" N	96° 46' 0.00" W	25° 47' 0.00" N	95° 14' 0.00" W
26° 5' 0.00" N	95° 44' 0.00" W	25° 52' 0.00" N	96° 17' 0.00" W
25° 57' 0.00" N	93° 13' 0.00" W	25° 53' 0.00" N	96° 46' 0.00" W
25° 43' 0.00" N	92° 44' 0.00" W		

On April 17, 2023 between the hours of 6:55am CST and 11:10am CST, rocket launching potential debris areas will be bound by the following approximate positions:

25° 57' 0.00" N	97° 12' 0.00" W	25° 36' 0.00" N	90° 24' 0.00" W
26° 2' 0.00" N	97° 12' 0.00" W	24° 41' 0.00" N	84° 52' 0.00" W
26° 3' 0.00" N	97° 7' 0.00" W	24° 30' 0.00" N	84° 52' 0.00" W
26° 7' 0.00" N	96° 59' 0.00" W	25° 9' 0.00" N	90° 30' 0.00" W
26° 10' 0.00" N	96° 49' 0.00" W	24° 55' 0.00" N	91° 6' 0.00" W
26° 32' 0.00" N	96° 25' 0.00" W	25° 9' 0.00" N	92° 53' 0.00" W
26° 42' 0.00" N	95° 34' 0.00" W	25° 14' 0.00" N	93° 53' 0.00" W
26° 42' 0.00" N	92° 53' 0.00" W	24° 58' 0.00" N	94° 40' 0.00" W
26° 8' 0.00" N	91° 5' 0.00" W	25° 12' 0.00" N	96° 10' 0.00" W
25° 57' 0.00" N	97° 12' 0.00" W		

Mariners are advised to avoid using the South Fairway Anchorage during test activities. Contact the Port of Brownsville Harbor Master to coordinate anchorage location during test activities. Local Mariners are advised to check Broadcast Notice to Mariners on VHF Channel 22A/157.100 MHz before entering the region and should avoid the area shaded in red below during the test period.



Additional information is available on the Cameron County website:
<https://www.cameroncounty.us/spacex/>.

J. B. Gunning

J. B. GUNNING
Captain, U.S. Coast Guard
Captain of the Port