



Marine Safety Information Bulletin

147-23

Hazard Area: Brownsville, TX

Issue Date: November 13, 2023

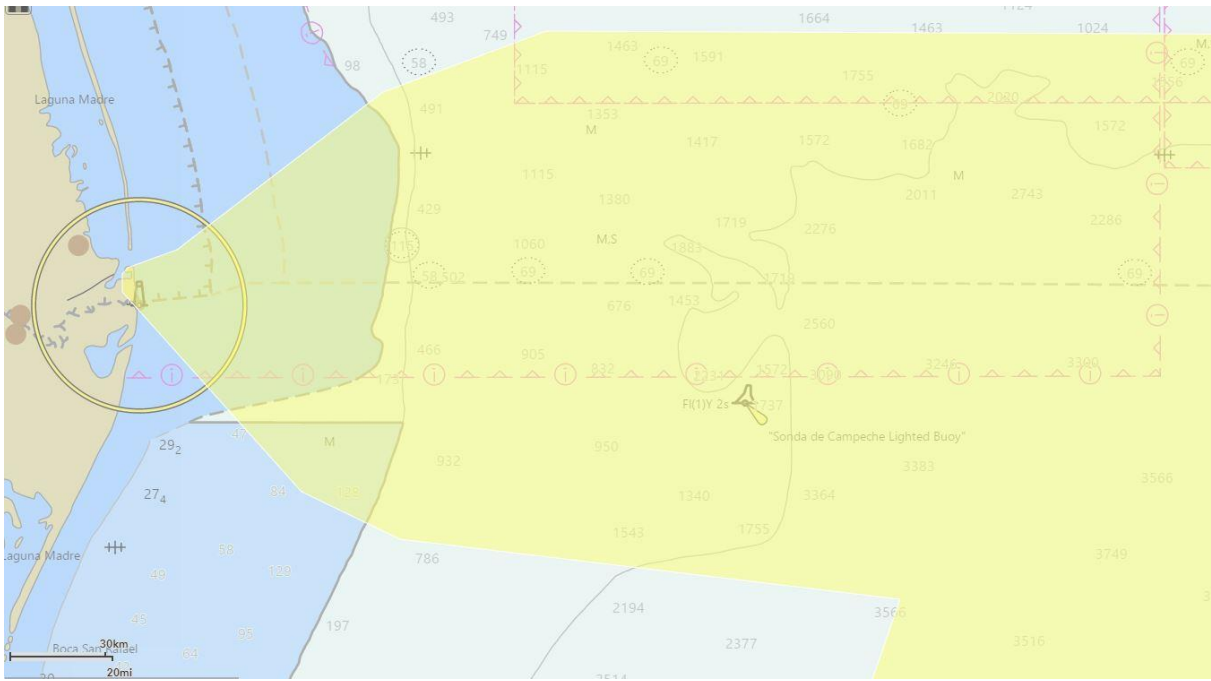
SpaceX has informed the U.S. Coast Guard of scheduled testing at their facility located south of Brownsville, TX, near Boca Chica Beach. Mariners operating offshore in waters east of Brownsville, Texas, are advised of rocket launching activities and associated hazardous areas which may impact navigation interests. Navigational hazards from rocket launching activity may include, free falling debris and/or descending vehicles or vehicle components, under various means of control. Mariners should avoid all waters within rocket flight trajectories originating from launch sites in the vicinity of Boca Chica and Brownsville, Texas. On November 17, 2023 between the hours of 5:25am CST and 11:10am CST (with backup date of November 18 - November 20, 2023, each day), rocket launching operations areas will be bound by the following approximate positions:

25° 51' 0.00" N	96° 46' 0.00" W	26° 03' 0.00" N	95° 43' 0.00" W
25° 48' 0.00" N	96° 14' 0.00" W	26° 06' 0.00" N	96° 45' 0.00" W
25° 40' 0.00" N	95° 03' 0.00" W	26° 07' 0.00" N	96° 57' 0.00" W
25° 21' 0.00" N	93° 15' 0.00" W	26° 03' 0.00" N	97° 07' 0.00" W
25° 26' 0.00" N	92° 48' 0.00" W	26° 02' 0.00" N	97° 12' 0.00" W
25° 58' 0.00" N	92° 47' 0.00" W	25° 57' 0.00" N	97° 12' 0.00" W
26° 04' 0.00" N	93° 18' 0.00" W	25° 52' 0.00" N	97° 01' 0.00" W
26° 01' 0.00" N	94° 13' 0.00" W	25° 51' 0.00" N	96° 46' 0.00" W
26° 00' 0.00" N	94° 48' 0.00" W	25° 51' 0.00" N	96° 46' 0.00" W

On November 17, 2023 between the hours of 6:55am CST and 11:10am CST (with backup date of November 18 - November 20, 2023, each day), rocket launching potential debris areas will be bound by the following approximate positions:

22° 53' 0.00" N	76° 48' 0.00" W	25° 26' 0.00" N	96° 38' 0.00" W
22° 50' 0.00" N	76° 49' 0.00" W	25° 59' 0.00" N	97° 11' 0.00" W
23° 49' 0.00" N	81° 17' 0.00" W	26° 02' 0.00" N	97° 11' 0.00" W
23° 44' 0.00" N	81° 30' 0.00" W	26° 03' 0.00" N	97° 10' 0.00" W
24° 20' 0.00" N	84° 58' 0.00" W	26° 06' 0.00" N	97° 01' 0.00" W
24° 57' 0.00" N	90° 10' 0.00" W	26° 32' 0.00" N	96° 23' 0.00" W
24° 43' 0.00" N	90° 30' 0.00" W	26° 42' 0.00" N	95° 53' 0.00" W
24° 47' 0.00" N	92° 27' 0.00" W	26° 41' 0.00" N	91° 31' 0.00" W
24° 45' 0.00" N	93° 47' 0.00" W	25° 49' 0.00" N	89° 50' 0.00" W
24° 28' 0.00" N	94° 45' 0.00" W	24° 53' 0.00" N	84° 28' 0.00" W
24° 29' 0.00" N	95° 03' 0.00" W	24° 03' 0.00" N	81° 04' 0.00" W
25° 08' 0.00" N	94° 48' 0.00" W	22° 53' 0.00" N	76° 48' 0.00" W
25° 18' 0.00" N	96° 20' 0.00" W		

Mariners are advised to avoid using the South Fairway Anchorage during test activities. Contact the Port of Brownsville Harbor Master to coordinate anchorage location during test activities. Local Mariners are advised to check Broadcast Notice to Mariners on VHF Channel 22A/157.100 MHz and/or observe test period information on traffic signs located at the entrance of South Bay and Barracuda's Cove before entering the region and should avoid the area shaded in yellow below during the test period.



Additional information is available on the Cameron County website:
<https://www.cameroncounty.us/spacex/>.

A. GAROFALO
 Lieutenant Commander, U.S. Coast Guard
 By Direction of the Captain of the Port