



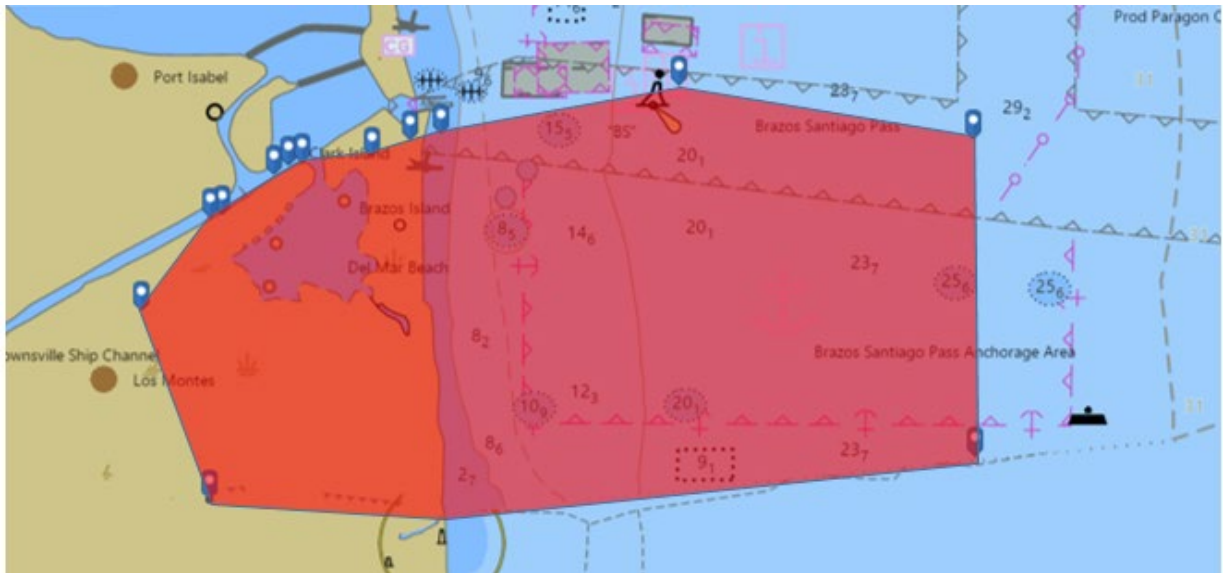
## Marine Safety Information Bulletin

07-21

### SpaceX Hazard Area

Issue Date: January 24, 2021

SpaceX has informed the U.S. Coast Guard that there will be a launch from their facility located south of Brownsville, TX, near Boca Chica Beach during daylight hours between January 25, 2021 and January 27, 2021. The shaded area below represents the U.S. waters portion of the hazard area SpaceX identified as susceptible to hazards including blast pressure, debris, gaseous leaks, and fires during launches. Mariners are advised to check Broadcast Notice to Mariners on VHF Channel 22A/ 157.100 MHz before entering that region, and should not enter into the area outlined below during SpaceX launches.



The hazard area includes, but is not limited to, South Bay, the majority of the southern Brazos Santiago Pass Anchorage Area, a portion of the Safety Fairway into the Brownsville Ship Channel, and approximately 4 miles of the Rio Grande.

The boundaries for the U.S. waters portion of the hazard area are approximately:

26° 0' 36.15" N, 097° 14' 13.82" W  
26° 2' 5.67" N, 097° 12' 58.10" W  
26° 2' 9.79" N, 097° 12' 46.26" W  
26° 2' 48.28" N, 097° 11' 49.55" W  
26° 2' 56.90" N, 097° 11' 32.86" W  
26° 2' 58.86" N, 097° 11' 18.25" W  
26° 3' 6.42" N, 097° 10' 3.20" W  
26° 3' 21.34" N, 097° 9' 20.63" W

26° 3' 28.55" N, 097° 8' 47.50" W  
26° 4' 14.24" N, 097° 4' 28.28" W  
26° 3' 22.64" N, 096° 59' 8.15" W  
25° 58' 13" N, 096° 59' 05" W  
25° 57' 15" N, 097° 08' 47" W  
25° 57' 32" N, 097° 12' 59" W

Additional information is available on the Cameron County website:  
<https://www.cameroncounty.us/spacex/>.

A handwritten signature in blue ink that reads "Margaret A. Brown". The signature is fluid and cursive, with a long horizontal flourish extending to the right.

M.A. BROWN  
Lieutenant Commander, U.S. Coast Guard  
By Direction of the Captain of the Port